

Blue Bayou

by Linda Ronstadt (written by Roy Orbison)

Blue Bayou

Linda Ronstadt

Tuning: E A D G B E

Intro
♩ = 95

Verse 1



mf feel so bad I got a wor- ried mind I'm so lone- some



all the time Since I left my ba- by be- hind On Blue Ba- you

Pre-Chorus



Sa- ving nic- kels, sa- ving dimes Wor- king till the sun don't shine



Loo- king for- ward to hap- pi- er times On Blue Ba- you

Chorus



I'm go- ing back some- day Comewhat may To Blue Ba- you Where the



folks are fine And the world is mine On Blue Ba- you Where those

Post-Chorus



fi- shing boats With their sails a- float If I could on- ly see That fa-



mil- iar sun- rise Through slee- py eyes How hap- py I'd be

Verse 2



Gon- na see my ba- by a- gain Gon- na be with some of my friends



May- be I'll feel bet- ter a- gain On Blue Ba- you

Pre-Chorus



Sa- ving nic- kels sa- ving dimes Wor- king till the sun don't shine

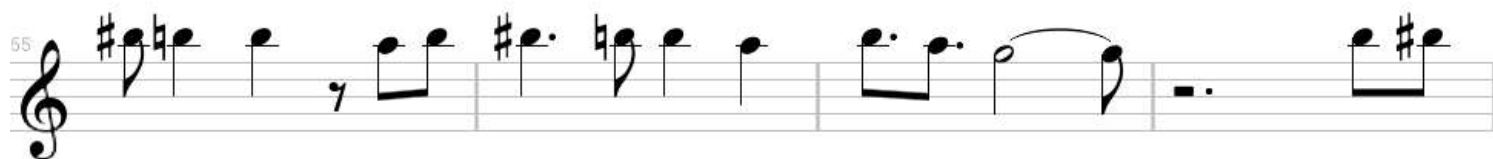


Loo- king for- ward to hap- pi- er times On Blue Ba- you I'm go- ing

Chorus



back some- day Comewhat may To Blue Ba- you Where the



folks are fine And the world is mine On Blue Ba- you Where those

Post-Chorus



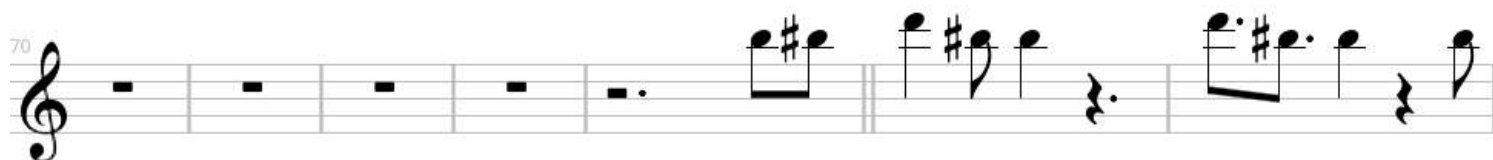
fi- shing boats With their sails a- float If I could on- ly see That fa-

Solo



mil- iar sun- rise Through slee- py eyes How hap- py I'd be

Chorus



Oh that boy of mine By my side The

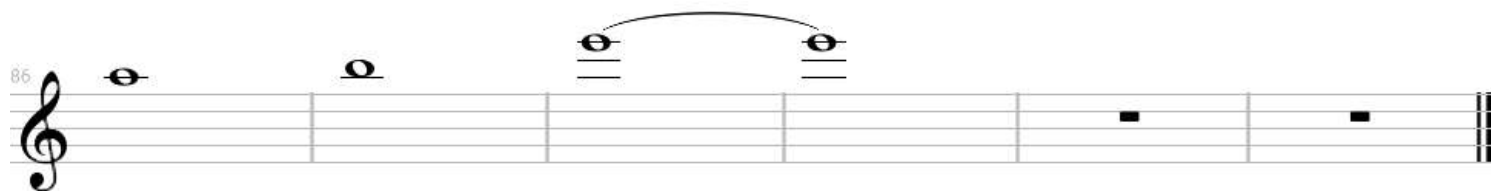


sil- ver moon And the eve- ning tide Oh some sweet day Gon- na take a- way This

Outro



hur- ting in- side Well I'll ne- ver be blue My dream some true On



Blue Ba- you